

Moor Park Road North Shields NE29 8RY

This charming period cottage, proudly standing on its wonderful plot since 1890, has been lovingly refurbished to retain period features while offering a modern, contemporary finish.

A traditional cottage-style door opens into a bright, spacious hallway with herringbone-effect flooring and a Victorian-style column radiator, leading seamlessly to the open-plan kitchen/diner and utility area. The kitchen is a true showstopper, with shaker-style units, real wood worktops, range cooker in the original fireplace, central island with seating, and a Victorian-style radiator, with double doors opening onto the rear garden.

The lounge is light-filled and inviting, with a feature fireplace, panelling, contemporary lighting, and a cream Victorian radiator. Upstairs, the landing and bedrooms are elegantly finished, including feature walls and period radiators, with flexible spaces for bedrooms, home office, or nursery. The Victorian-style bathroom boasts a freestanding bath with waterfall shower, bespoke vanity, chrome and cream radiator, and stylish tiling.

Externally, the property features a quaint front garden and a low-maintenance rear garden with raised beds, gravel patio, and enclosed fencing, creating a charming cottage retreat.

A stunning blend of period character and modern luxury, this home offers style, comfort, and functionality in a highly desirable location.

£1,400 Per month

3 Moor Park Road

North Shields NE29 8RY



- FULLY REFURBISHED COTTAGE
- THREE GOOD SIZE BEDROOMS
- EXCELLENT LOCATION
- STONES THROW FROM TYNEMOUTH
- DECEPTIVELY SPACIOUS THROUGHOUT
- VICTORIAN STYLE BATHROOM
- EPC GRADE C
- SHOWSTOPPER KITCHEN
- LOW MAINTENANCE GARDEN
- CLOSE TO GOOD SCHOOLS AND LOCAL AMENITIES

Entrance Hallway

A traditional cottage-style door opens into a beautifully light and spacious hallway, setting an immediate tone of quality and refinement. Finished in a soft neutral palette and laid with luxurious herringbone-effect flooring, this welcoming space blends timeless character with modern design. A Victorian-inspired raw metal column radiator adds a striking architectural feature, perfectly complementing the home's elegant aesthetic. From here, the hallway flows naturally into the open-plan kitchen and dining area, with convenient access to a well-designed utility space, creating a harmonious blend of style and practicality.

Lounge

The lounge is a beautifully light-filled and inviting space, finished in a neutral palette to enhance its sense of calm and sophistication. Thoughtfully designed panelling to the alcoves is complemented by contemporary integrated lighting, adding both texture and warmth. A striking feature fireplace takes centre stage, showcasing a brick slip tiled inset, a granite-effect black hearth, and a solid wood mantel that brings a touch of natural charm and timeless elegance. Adding a stylish, period-inspired touch, a tall Victorian-style column radiator in raw metal finish combines functionality with decorative appeal. A glazed internal door allows even more natural light to flow through, creating a seamless connection between living spaces and enhancing the home's bright, open feel.

Kitchen/Diner

The kitchen and dining area is a true showstopper, blending traditional craftsmanship with modern elegance. A collection of pebble-toned shaker-style base units is paired with solid real wood work surfaces, creating a timeless aesthetic that exudes

quality. The enamel sink with mixer tap sits perfectly beneath soft lighting, while the impressive range cooker nestles within the original fireplace, framed by a tiled splashback and a solid wood decorative shelf above, complete with a discreet inset extractor for a seamless finish.

An expansive kitchen island provides both form and function, featuring matching shaker cabinetry, real wood worktops, and ample integrated storage. Overhead, a trio of feature pendant lights adds a stylish focal point, complemented by recessed ceiling spotlights that enhance the room's natural warmth. The island also offers an inviting seating area, perfect for relaxed dining or entertaining, with double doors that open onto the garden — effortlessly bringing the outside in. Adding a subtle period-inspired statement, a tall Victorian-style column radiator in raw metal finish combines functionality with elegant decorative charm, enhancing the kitchen's sophisticated atmosphere.

Utility Area

The utility area is thoughtfully designed to combine functionality with style. Open-plan and seamlessly connected to the kitchen, it features matching pebble-toned shaker units and solid wood worktops, providing a harmonious continuation of the home's elegant aesthetic. Practicality is key, with plumbing in place for a washing machine, while the herringbone-effect flooring flows effortlessly from the hallway and kitchen, unifying the space. Recessed ceiling spotlights provide a bright, contemporary finish, making this a stylish and highly practical extension of the heart of the home.

First Floor Landing

The first-floor landing is bright, airy, and beautifully appointed,

reflecting the attention to detail evident throughout the home. A modern stair runner is complemented by coordinating stair rods that perfectly echo the Victorian-style radiators, adding a subtle yet stylish continuity of design. The space feels open and welcoming, with natural light enhancing its elegant finish, and provides convenient access to the loft, combining practicality with refined style.

Bedroom

Situated at the front of the property, this generous double bedroom perfectly blends classic charm with contemporary style. A cream Victorian-style radiator adds period elegance, while an elegant feature wall provides a sophisticated focal point. The room is bright and inviting, offering a calm and stylish retreat that harmonises with the home's attention to detail and refined aesthetic.

Bedroom

This double bedroom is beautifully light and airy, with a front-facing aspect that fills the space with natural sunlight. Finished in neutral tones, it offers a bright and inviting atmosphere, while a cream Victorian-style radiator adds a touch of period elegance, creating a versatile and stylish retreat that complements the home's sophisticated character.

Bedroom

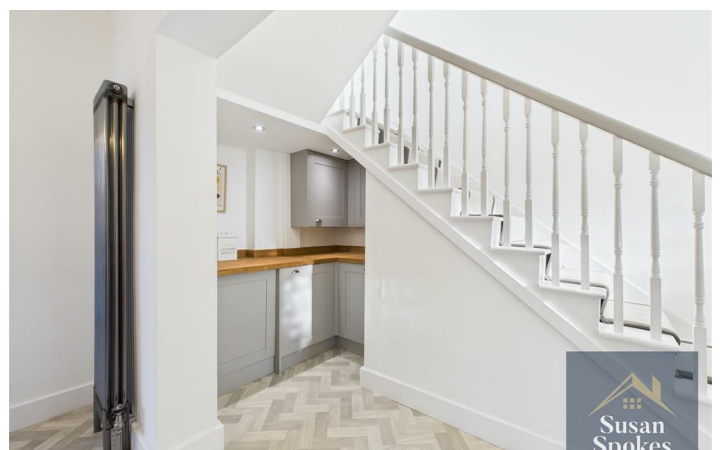
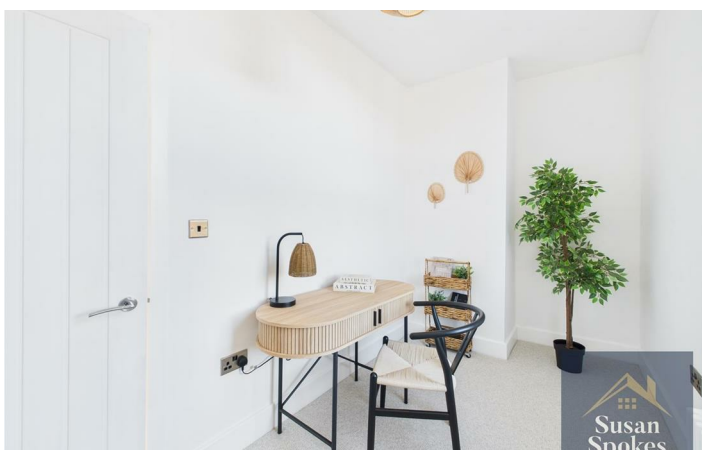
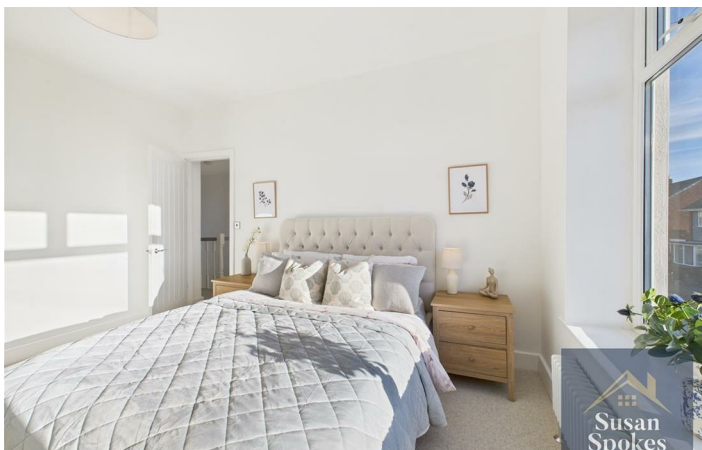
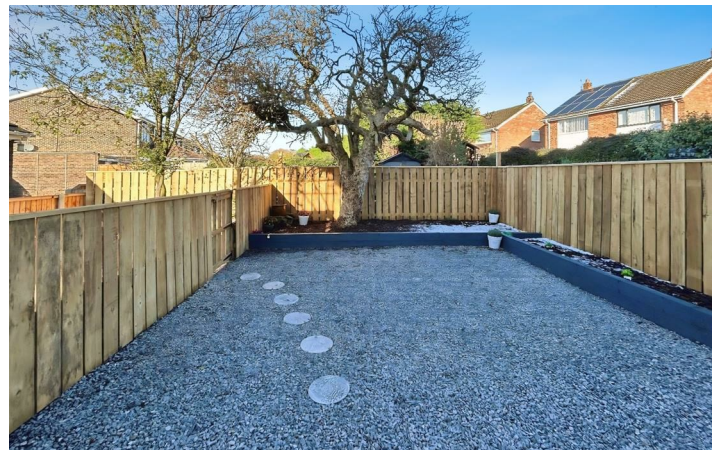
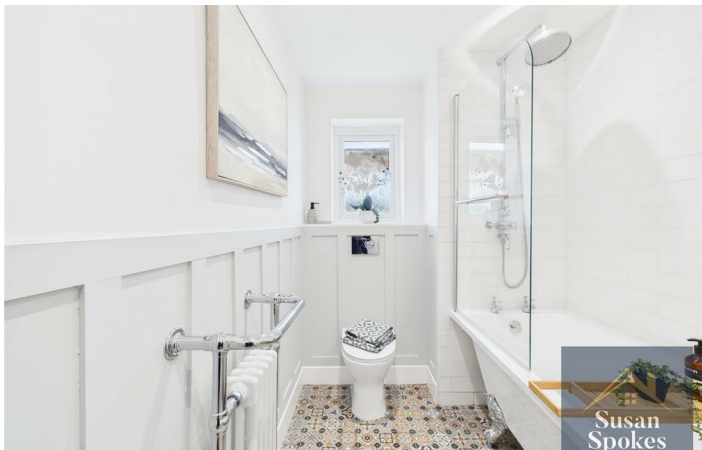
This versatile bedroom offers the perfect opportunity as a bedroom, nursery, or home office, combining flexibility with style. Neutrally decorated and thoughtfully finished, the room is bright and inviting, with a lovely view over the garden,

Bathroom

This Victorian-style bathroom perfectly complements the period



Directions



Floor Plan



These particulars, whilst believed to be accurate are set out as a general outline only for guidance and do not constitute any part of an offer or contract. Intending purchasers should not rely on them as statements of representation of fact, but must satisfy themselves by inspection or otherwise as to their accuracy. No person in this firms employment has the authority to make or give any representation or warranty in respect of the property.

